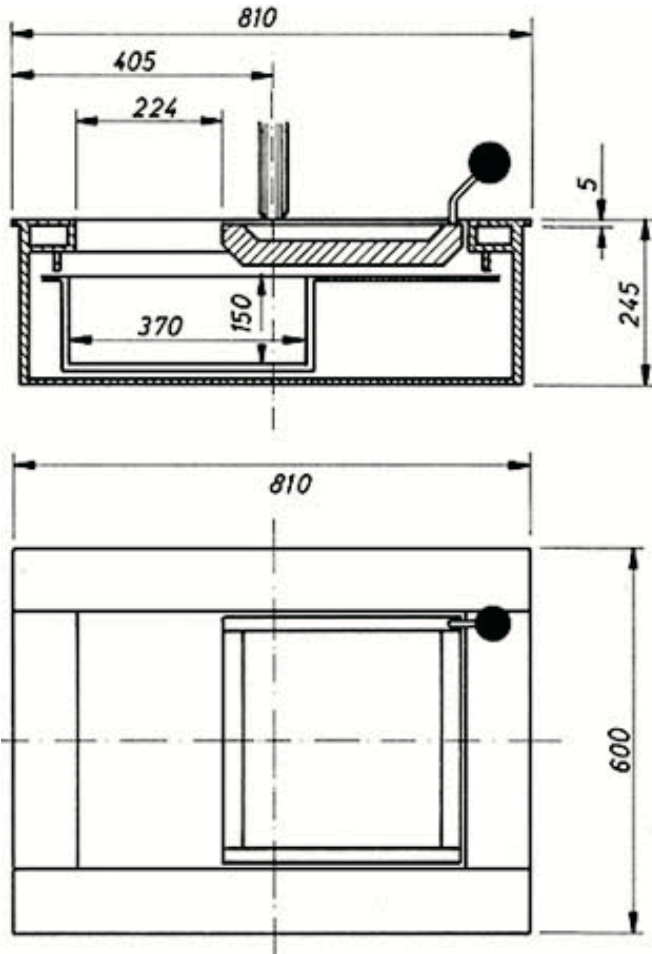


# modell 24.



Developed for regional central bank branches and similar institutions, this cash-drawer has a flat tray and carriage moving in opposite directions.

The tray permits passing documents up to paper size DIN A4, while the carriage allows the passing of items up to 150 mm high.

The drawer is automatically locked in both end positions and also in its mid-position.

A rolling shutter is fastened to both sides of the carriage to close the openings at both ends of the drawer when the tray is in mid-position.

## Design

Supporting structure of steel plate. Covering frame, flat tray and carriage of stainless steel.

Side walls of flat tray and rolling shutter of anodized aluminium.

## Outside dimensions

Width 600 mm

Depth 810 mm

Height 245 mm

## Inside dimensions

### Tray

Width 357 mm

Height 20 mm

### Carriage

Width 390 mm

Depth 370 mm

Height 150 mm

### Access opening

Width 390 mm

Depth 224 mm

